

## How the Dean Blakely Windows Phone 7 apps work . . .



myTripTracker



PhoneStalker



RealTimeSpy



ShowMeTheWay

### SUMMARY:

PhoneStalker, myTripTracker, and ShowMeTheWay record breadcrumb trails of a phone's position as it moves about. RealTimeSpy and <http://www.deanblakely.com/RealTimeViewer.aspx> can allow viewing of those breadcrumb trails even as they are being recorded – Real Time.

### DETAILS:

First, "myTripTracker" and "PhoneStalker" do exactly the same thing so we will use only "PhoneStalker" here for this description. The two apps are just branded differently because some people don't like the idea of "stalking" someone while other people really like that idea.

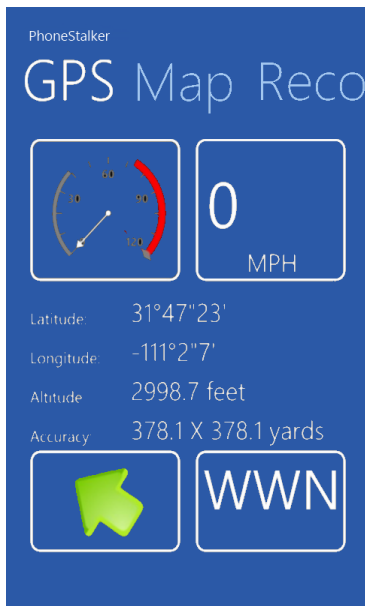
**PhoneStalker** can record movement of your phone and show the trail on its MAP screen as you take a trip. When you are done with the trip, you can give it a name, save it on the phone, recall it back to the map if you want where you can look at the statistics for that trip. To do all of this, PhoneStalker must be running on your phone while the trip is taking place. It's best if you lock the phone during the trip so that inadvertent gestures, such as pocket dialing, don't interrupt the recording of the breadcrumb trail.

If you enter your email address into PhoneStalker and turn on the permissions you can enable the following additional features:

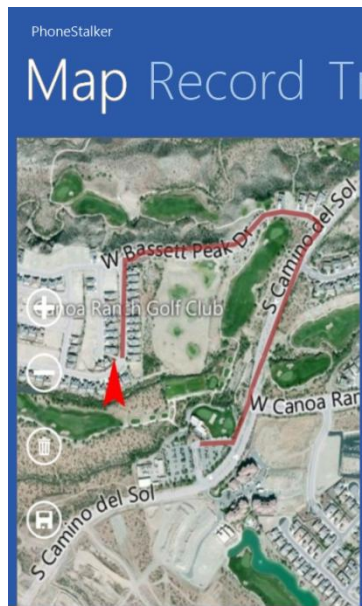
1. Your trips can be emailed to you for viewing on your PC or MAC. When you receive the email on your computer it will contain a KML file that can be used to view your trip in 3D on Google Earth. The email will also contain two http links that will allow you to view the trip on Google Maps or Bing Maps. The email also contains the statistics on your trip. Viewing your trip through New York City or Paris on Google Earth where you can walk the same streets again in Ground View is amazing.
2. You can enable Real Time Recording where the phone's movement will be recorded real time on central cloud servers. The trip can then be viewed as it takes place either from the RealTimeViewer.aspx webpage or from another Windows Phone 7 running RealTimeSpy. The trip will also remain on the servers for at least 30 Days. The RealTimeSpy app allows you to physically follow the movement of the target phone if you desire.
3. Running on a 512 meg phone, you can record phone movement "beacons" when PhoneStalker is NOT running. These beacons are similar to the trip legs that make up a trip that is recorded when PhoneStalker is running except that beacons are only recorded approximately once each half hour. This means that a phone's movement can be continually tracked and monitored real time or historically either from the web or from another phone running RealTimeSpy. Remember that Real Time Tracking must be enabled for the trips to be real time monitored. For beacons, Background Location Tracking has to be enabled.

The email address is very important because it is what links the recorded trips to the viewing programs. When you record with any of the apps, your trips and/or your beacons are stored in the cloud servers under the email address you entered. To view trips or beacons with the viewing apps, you must enter that same email address.

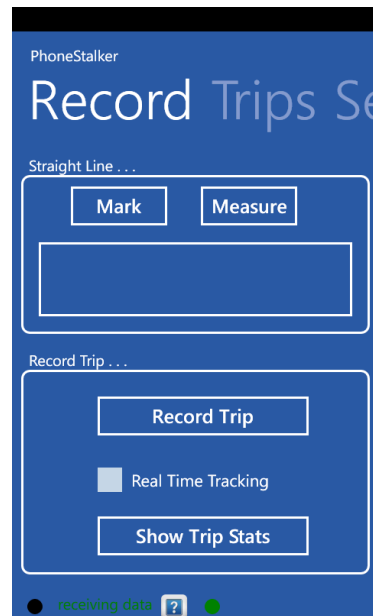
The following are the main screens of the PhoneStalker app . . .



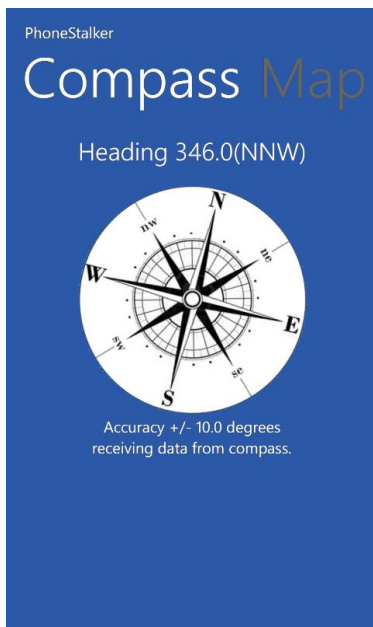
The GPS screen gives instant feedback about where you are, how fast you are going and what direction you are going.



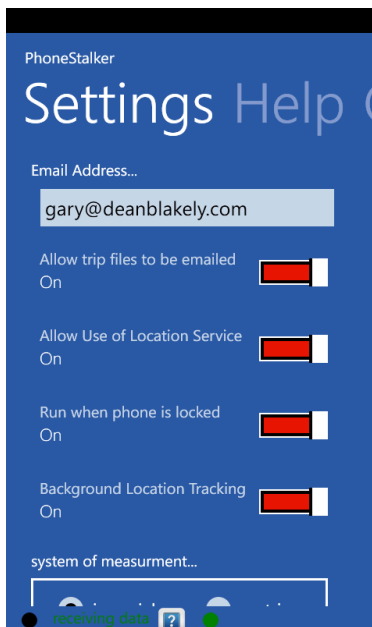
The Map screen shows where you are and the breadcrumb trail of your trip.



You can measure straight line distances, record a trip, show trips stats at any time, and specify real time tracking.



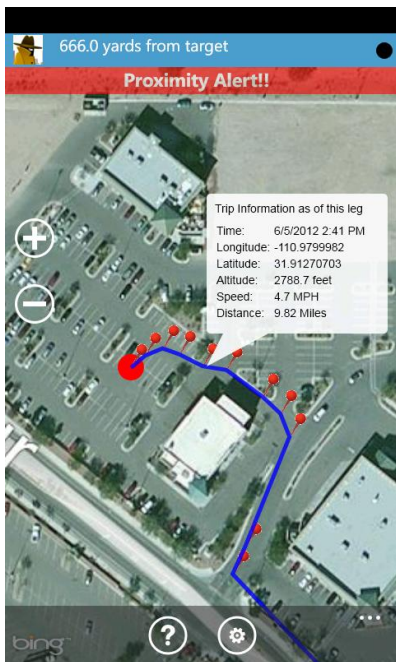
In addition to tracking trips, phoneStalker is handy keeping you from getting lost when out wondering about.



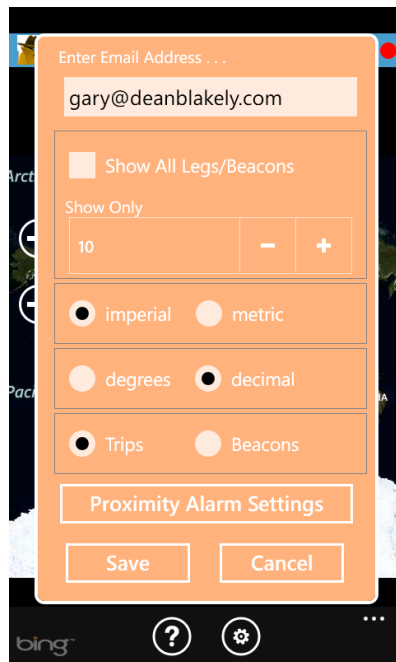
You control what the app is allowed to do.

**RealTimeSpy** and <http://www.deanblakely.com/RealTimeViewer.aspx> (you can usually use [gary@DeanBlakely.com](mailto:gary@DeanBlakely.com) to view a trip) need to have the same email address that the user of PhoneStalker entered. This is because the trip in the cloud server is keyed by this email address. It is important to remember that in PhoneStalker when a trip is set up, that Real Time Tracking must be checked if the trip is going to be viewed from either the web or RealTimeSpy. Once everything is set up, the trip, all of its legs, and location information on each leg can be viewed.

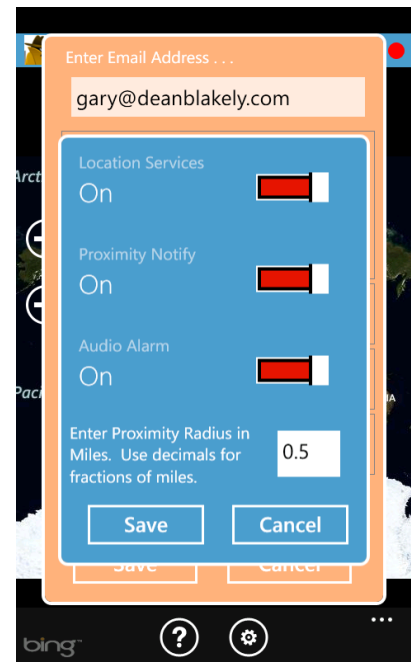
Using the web viewer at DeanBlakely.com allows you to sit at your computer and track trips or location beacons. With the RealTimeSpy app, however, you can physically track the target phone's movement. RealTimeSpy also keeps you informed on the distance between your own phone and the target phone and will give you a proximity warning if you desire.



Each leg of a trip has a pushpin that contains info about that leg. The larger red dot is the current or last position of the target phone.



Both trips and beacons can be tracked, controlling how many show.



You define if and at what distance you want a proximity alert.

There are numerous practical uses for tracking and viewing of phone locations and this is made more affordable because of new inexpensive or free Windows phones. All of our apps also run on the new low cost 256 meg phones. Many people want their friends and family to know where they are. Other people want to know where their friends and family are.

It's great for making sure your kids are where they should be. Handy when you are meeting someone either in a large city or out in the country. Great for caravanning in cars and knowing where the caravan leader is – distance is no problem. Recording trips and keeping them is useful for walkers, runners, or bicyclists.

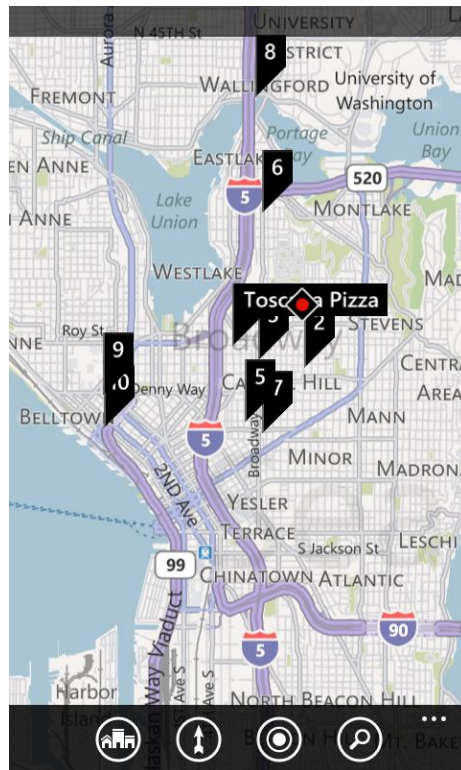
**ShowMeTheWay** is a navigation app that has the same functionality as the Windows Phone 7 Microsoft Maps app plus two additional features: (1) It has a compass screen and (2) it will also record background location beacons when the app is NOT running. This means that, for instance, you can put ShowMeTheWay on your children's phone, giving them a useful navigation app and also be able to track their whereabouts real time if you want.

ShowMeTheWay harness the powerful Bing Navigation Tasks to provide one of the most advanced navigation presentations available on any phone. So, people wanting to track someone don't have to put "a tracking app" on their phone – they can put a useful navigation app on instead and still be able to track their phone.

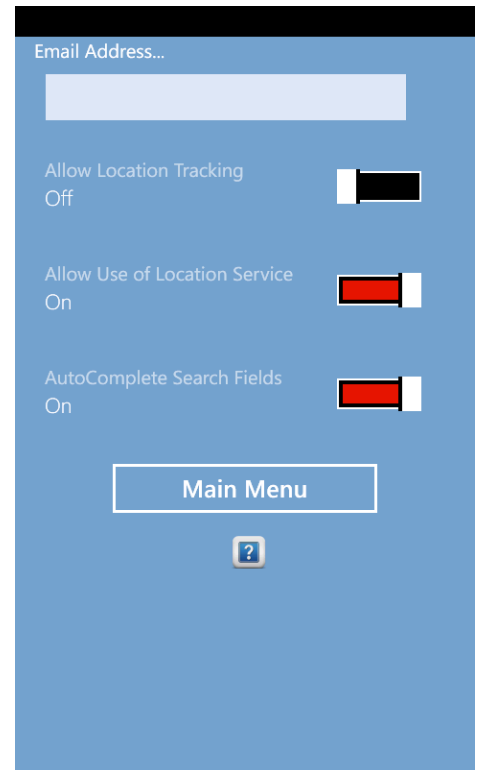
Here are a few screens samples for ShowMeTheWay . . .



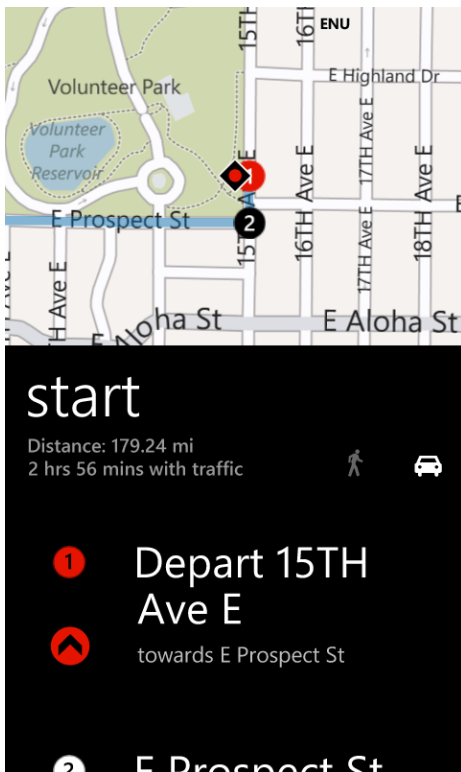
The interface to the navigation engine makes it simple and intuitive to use the navigator.



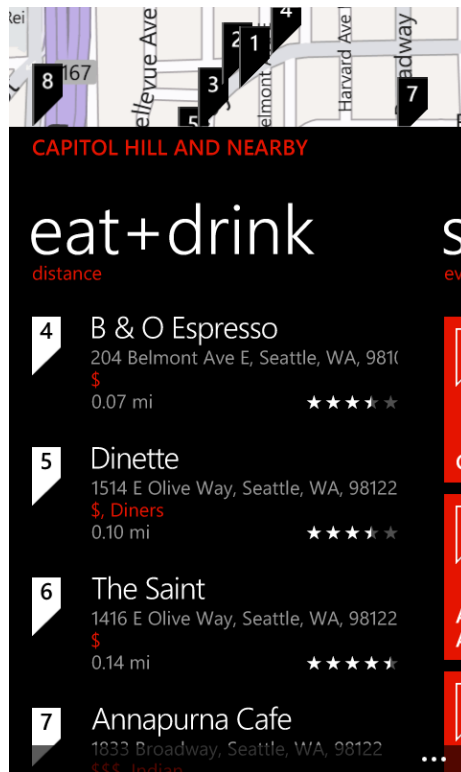
Find pizza places in Redmond WA



A way to turn on location tracking is on this screen. Autocomplete feature keeps you from ever having to type something twice.



The Bing Voice Navigation engine is cleverly designed so that you can use it in your car and never have to look at the phone. See directions below.



Shopping and restaurant guides are included.



You can view reviews and you can add your own review right here.

## **How to use the navigator when following route directions . . .**

ShowMeTheWay uses the Windows Phone 7 Bing navigation engine. This navigation engine is cleverly designed so that you don't have to look at your phone while driving and following directions. The problem is that it's not obvious how it is supposed to be used.

Once you get directions to a place, the trip Start is displayed showing where you are. You now lay the phone down on your console, tap anywhere on the screen and you will hear step 1 of the directions. If you never tap on the screen again you will never hear any more directions. When you make turns you will either hear a "correct beep" or an "error beep." This is because we often know pretty much where we are going and don't have to follow each step on the directions.

If you want to hear what you are supposed to do, at any time during the trip, just tap the screen anywhere and you will hear what you are supposed to do next.

Once you experience this audio interface you will see that it is very effective and allows you to keep your eyes on the road. If you don't know where you are going you will be tapping the screen often. If you sort of know the way, it will confirm your turns and tell you if you made a mistake.

If you go off on a side trip, it seems to understand and just says "tap the screen if you want me to recalculate" else it will let you take the side trip and pick back up when you are back on the route.

There are over 30 additional features planned for this suite of apps that will be implemented as the Windows Phone 7 platform gains market share. Anyone wanting a specific feature or having a question should send an email to [gary@deanblakely.com](mailto:gary@deanblakely.com).

Gary Blakely  
Dean Blakely & Assoc.

END OF DOCUMENT